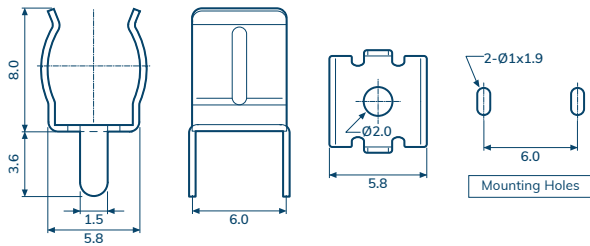


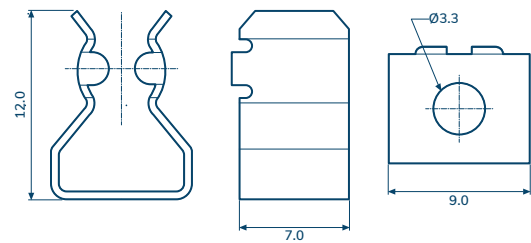
CQ-205D

For 6.3mm Dia. Fuses



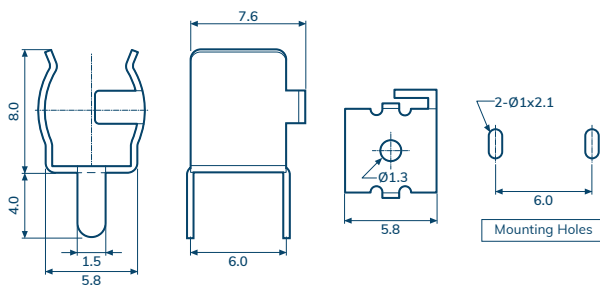
CQ-205E

For 6.3mm Dia. Fuses



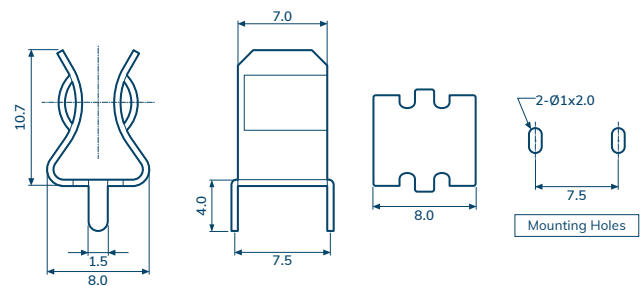
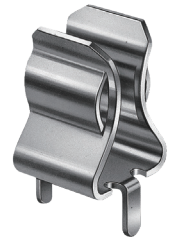
CQ-205DH

For 6.3mm Dia. Fuses



CQ-205S

For 6.3mm Dia. Fuses



Item Number	CQ-205D	CQ-205E	CQ-205DH	CQ-205S
Metal Material	Brass	Phosphor Bronze	Phosphor Bronze	Brass
Material Thickness	0.4 mm	0.5 mm	0.4 mm	0.5 mm
Suitable Rated Current	15 A	15 A	15 A	25 A
Fuse Type	Ear Type	Ear Type	Ear Type	Ear Type
Plating Type	Bright Tin Plated	Bright Tin Plated	Bright Tin Plated	Bright Tin Plated