

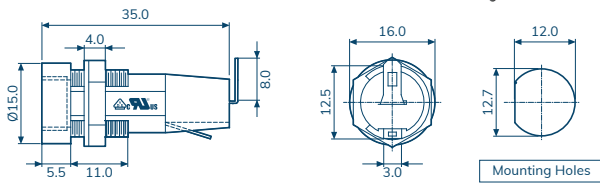
Conquer fuse holders feature for easy removal, clearly printed/imprinted “fuse” designation for easy panel identification and keyed mounting hole requirement for anti-rotation safety. All fuse holders include mounting washer and solder lugs for wiring.

- Insulating body : flame retarding UL 94 V0 thermoplastic material.
- Contact : Nickel or Tin plated copper alloy.

CQ-206S

RoHS

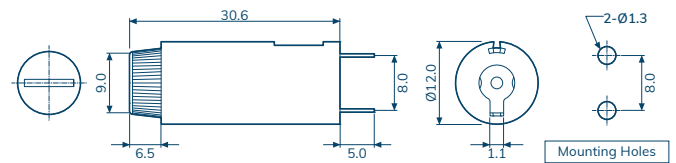
For 5x20mm Fuse



CQ-206C

RoHS

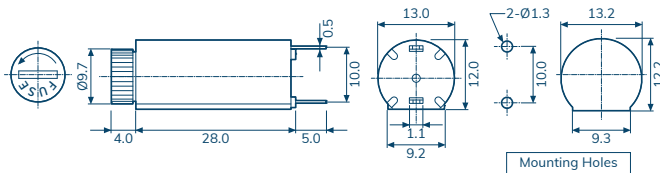
For 5x20mm Fuse



CQ-206CV

RoHS

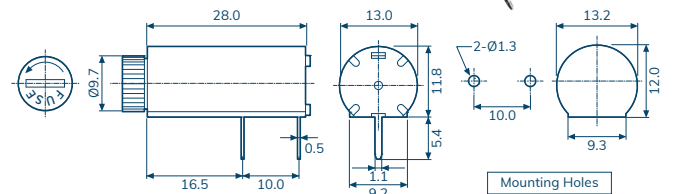
For 5x20mm Fuse



CQ-206CH

RoHS

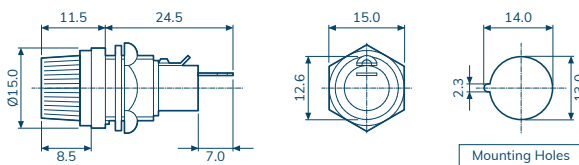
For 5x20mm Fuse



CQ-206HU

RoHS

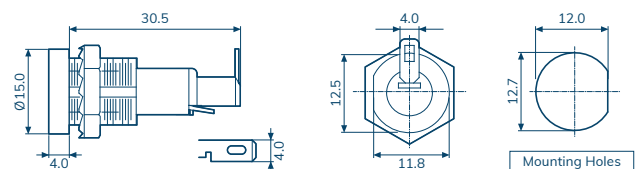
For 5x20mm Fuse



CQ-206D

RoHS

For 5x20mm Fuse



Item Number	CQ-206S	CQ-206C	CQ-206CV	CQ-206CH	CQ-206HU	CQ-206D
Rated Current	10A / 250V	10A / 250V	10A / 250V	10A / 250V	10A / 250V	10A / 250V
Insulation Resistance At 500 VDC	100M Ω Min	100M Ω Min	100M Ω Min	100M Ω Min	100M Ω Min	100M Ω Min
Contact Resistance	5m Ω At 1A DC	5m Ω At 1A DC	5m Ω At 1A DC	5m Ω At 1A DC	5m Ω At 1A DC	5m Ω At 1A DC
Dielectric Strength For 60 Sec	AC2000V Min.	AC1000V Min.	AC1000V Min.	AC1000V Min.	AC2000V Min.	AC1500V Min.
Screw Driver Knob Approval						