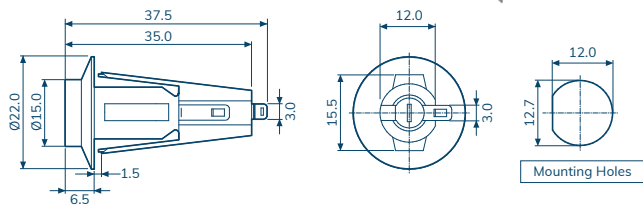


### CQ-206F

RoHS

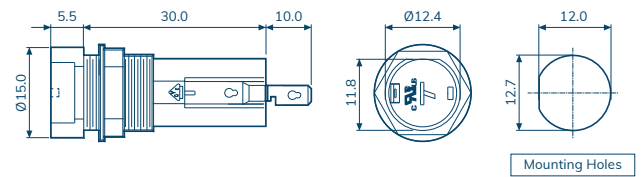
For 5x20mm Fuse



### CQ-206M

RoHS

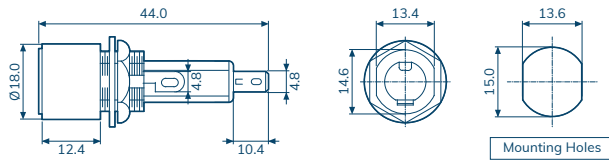
For 5x20mm Fuse



### CQ-207A

RoHS

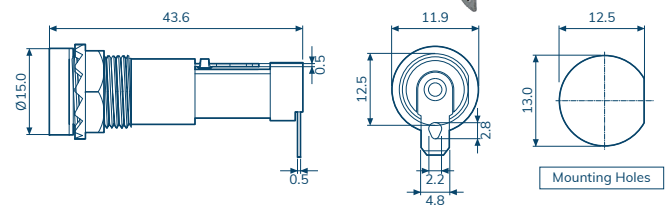
For 6.3x32mm Fuses



### CQ-207D

RoHS

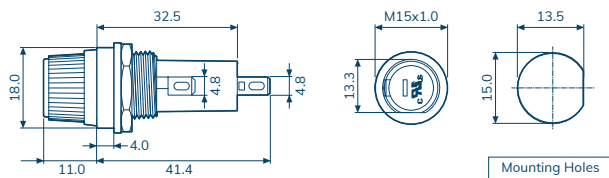
For 6.3x32mm Fuses



### CQ-207HU

RoHS

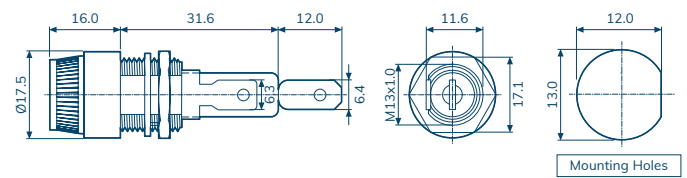
For 6.3x32mm Fuses



### CQ-207TU

RoHS

For 6.3x32mm Fuses



Item Number	CQ-206F	CQ-206M	CQ-207A	CQ-207D	CQ-207HU	CQ-207TU
Rated Current	10A / 250V	10A / 250V	10A / 250V	15A / 250V	10A / 250V	10A / 250V
Insulation Resistance At 500 VDC	100MΩ Min	100MΩ Min	100MΩ Min	100MΩ Min	100MΩ Min	100MΩ Min
Contact Resistance	5mΩ At 1A DC	5mΩ At 1A DC	5mΩ At 1A DC	5mΩ At 1A DC	5mΩ At 1A DC	5mΩ At 1A DC
Dielectric Strength For 60 Sec	AC1500V Min.	AC2000V Min.	AC1500V Min.	AC1500V Min.	AC1500V Min.	AC1500V Min.
Screw Driver Knob Approval						