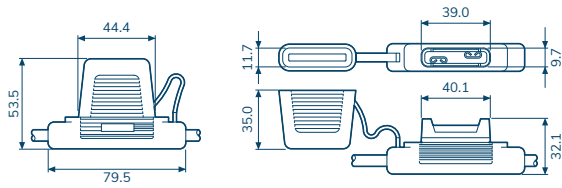
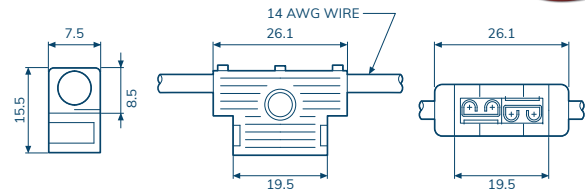


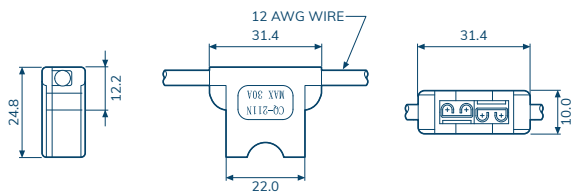
CQ-211MI RoHS
 For AMT(MAX) Blade Type Fuse
 Hinged Body Type



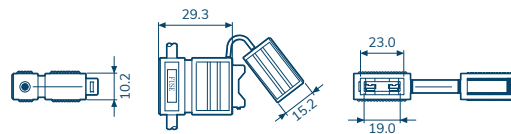
CQ-211A
 For ATQ Blade Type Fuse



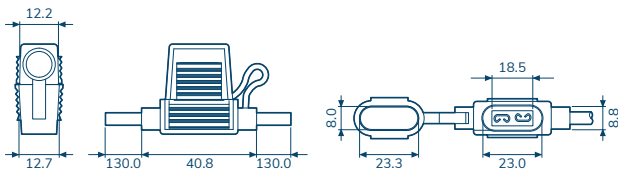
CQ-211N
 For ATQ Blade Type Fuse



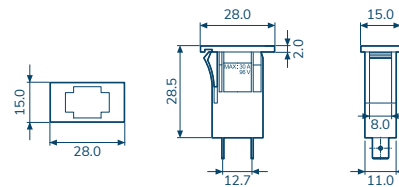
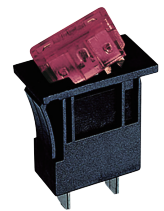
CQ-211C RoHS
 For ATQ Blade Type Fuse
 Hinged Body Type



CQ-211CN RoHS
 For ATQ Blade Type Fuse
 Hinged Body Type



CQ-211P
 For ATQ Blade Type Fuse



Item Number	CQ-211MI	CQ-211A	CQ-211N	CQ-211C	CQ-211CN	CQ-211P
Rated Current	80A	20A	30A	30A	30A	20A
Insulation Resistance At 500VDC	100MΩ Min	100MΩ Min	100MΩ Min	100MΩ Min	100MΩ Min	100MΩ Min
Contact Resistance	5mΩ At 1A DC	5mΩ At 1A DC	5mΩ At 1A DC	5mΩ At 1A DC	5mΩ At 1A DC	5mΩ At 1A DC
Dielectric Strength For 60 Sec	AC3000V Min.	AC1500V Min.	AC2000V Min.	AC1000V Min.	AC1000V Min.	AC1500V Min.
Body Material	P.V.C.	Nylon	Nylon	P.V.C.	P.V.C.	Nylon, Thermo Plastic
Supply Standard UL Wire-AWG/Length	8#AWG / 5" x 2	14#AWG / 8" Loop	12#AWG / 8" Loop	12#AWG / 12" Loop	12#AWG / 130mm*2	-