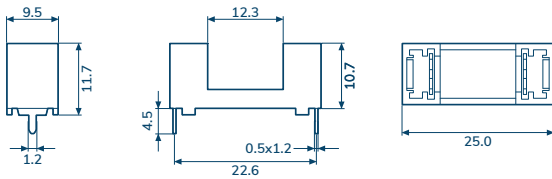
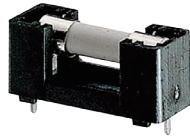




## CQ-2004

RoHS

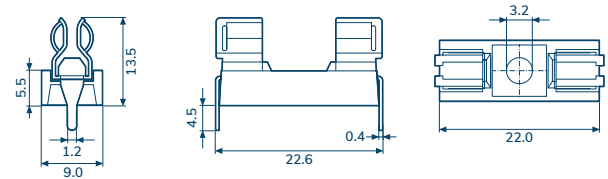
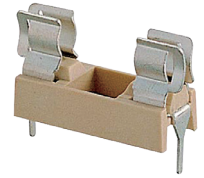
For 5x20mm Fuse



## CQ-2005

RoHS

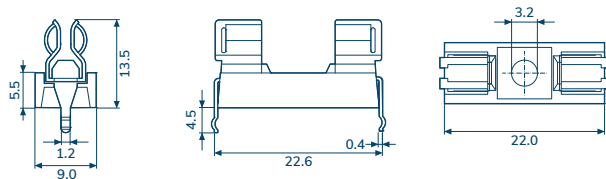
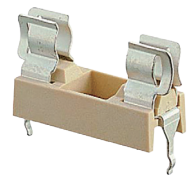
For 5x20mm Fuse



## CQ-2007

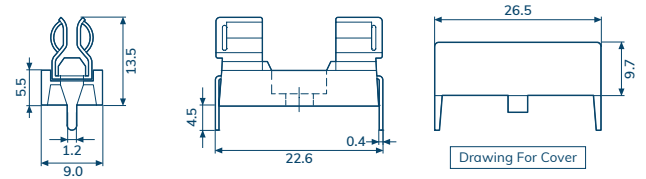
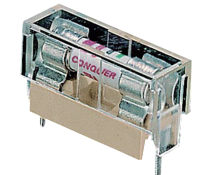
RoHS

For 5x20mm Fuse



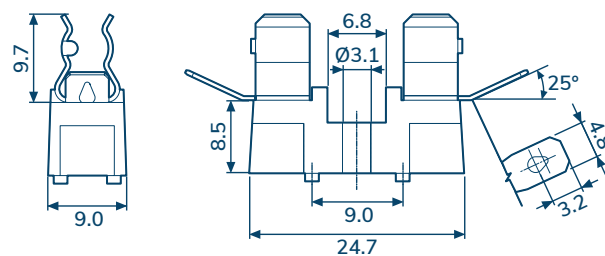
## CQ-200PT

For 5x20mm Fuse



## CQ-200N

For 5x20mm Fuse



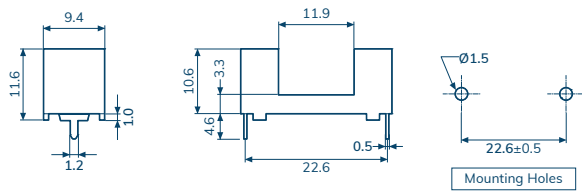
Item Number	CQ-2004	CQ-2005	CQ-2007	CQ-200PT	CQ-200N
Insertion & Extraction Force	1 Kg. Min.	1Kg. Min.	1Kg. Min.	1 Kg. Min.	1.5 Kg. Min.
Dielectric Strength For 60 Sec	AC 500V Min.	AC 2000V Min.	AC 2000V Min.	AC 2000V Min.	AC 2000V Min.
Suitable Rated Current	6.3A/250V	6.3A/250V	6.3A/250V	6.3A/250V	15A/250V
Insulation Resistance At500VDC	100MΩ Min	100MΩ Min	100MΩ Min	100MΩ Min	500MΩ Min
Temperature Rise	50°C Max	60°C Max	60°C Max	60°C Max	60°C Max
Voltage Drop	20mV Max.	15mV Max.	15mV Max.	15mV Max.	15mV Max.

Conquer fuse block are available for 1/4" x 1-1/4" and 5x20mm fuses. The special phenolic resin base offers extremely high insulative values and unless otherwise noted include special dual-purpose connection tabs for either quick-connect, push-on terminal wires or for soldering use. A wide variety of sizes, shapes and mounting configurations fulfill all fuse application. Additionally, conquer designers are available to produce a fuse block to meet your specific applications.

### CQ-201C

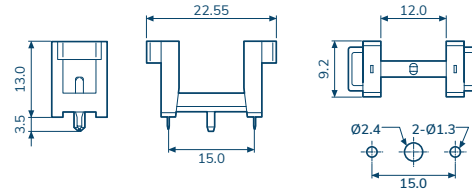
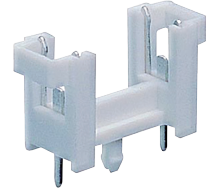
RoHS

For 5x20mm Fuse



### CQ-200I

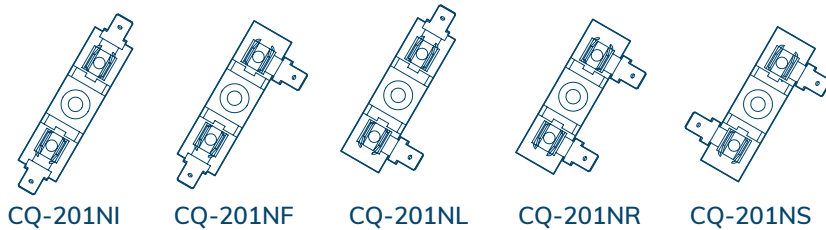
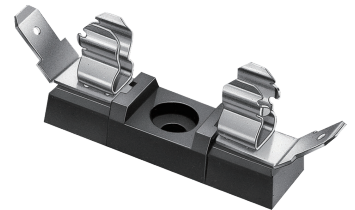
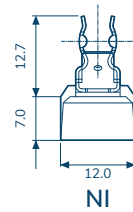
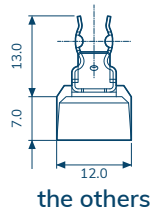
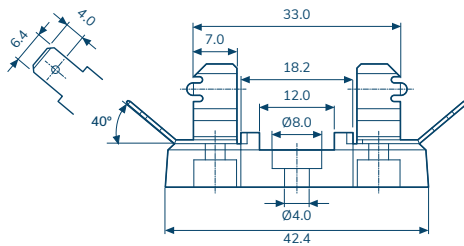
For 5x20mm Fuse



### CQ-201N

RoHS

For 6.3x32mm Fuse



Item Number	CQ-201C	CQ-200I	CQ-201N
Insertion & Extraction Force	1 Kg. Min.	1 Kg. Min.	1.5 Kg. Min.
Dielectric Strength For 60 Sec	AC 3000V Min.	AC 2000V Min.	AC 3000V Min.
Suitable Rated Current	6.3A/250V	6.3A/250V	30A/250V
Insulation Resistance At500VDC	100MΩ Min	100MΩ Min	500MΩ Min
Temperature Rise	-	50°C Max	60°C Max
Voltage Drop	-	20mV Max.	20mV Max.